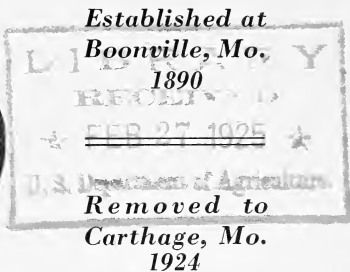


Historic, archived document

Do not assume content reflects current scientific knowledge, policies, or practices.

62.47

Included



RETAIL PRICE LIST

BERRY PLANTS, GRAPE VINES, SHRUBS,
ROSES AND FLOWER BULBS

For Sale Spring of 1925 By

H. W. Jenkins & Son

Carthage, Mo.

All Transportation Charges Prepaid on Plants

*“Every plant
a live one”*



A CHANGE OF LOCATION

To My Customers, Old, New and Prospective—

Probably you are already aware of the fact that in this old world of ours change is the one thing that is continually taking place. Sometimes it comes so gradually we can hardly perceive it, other times so sudden we are stunned by it. So this announcement may cause a little surprise when you read it, that I have made a change in my plant and nursery business by taking in my son M. D. Jenkins to help me, and changing my place of business from Boonville to Carthage, Mo.

It was with genuine regret that I left Boonville and Cooper county (a fine town and a good county), where I have been in business since 1890, but circumstances and surroundings all seemed to demand a change. So 1925 finds us in a **new but a good location—good level soil that does not erode**—on chat paved and concrete streets where we can come and go any-time, one-half mile East on Highland Ave. from Joplin and Carthage Electric line and one and one-half miles from Express and Post Office at Carthage, Missouri, "A No Mean City;" in fact one of the very best in the state with a reputation untarnished.

Carthage, the Gateway to the Ozarks from the north, is fortunately situated on three railroads and is the eastern terminus of the electric line that connects the mining districts of Mo.-Kan.-Okla. With two state primary highways now building, No. 1 to Kansas City and No. 14 to Springfield and St. Louis, and an Aviation Field under government control now practically assured, Carthage has mail and shipping facilities unsurpassed. Puts the **P. D. Q.** on deliveries. A letter or package mailed in afternoon is in Kansas City, St. Louis, Wichita or Oklahoma City the next morning.

A good reputation and the good will of a man's customers are two essential things for success and to gain them requires years of hard work and honest effort. For 34 years we have done our best to merit both, and for two years past have given a positive guarantee that when you receive your order and examine it if you are not satisfied and think it is not as represented, repack and return, and your money will be refunded. **Not a single order has ever come back.** That offer will be continued, for we do not want any dissatisfied customers.

Southwest Missouri is fast becoming the center of small fruit production of the state and the Ozark **Aroma** strawberries are known all over the United States. To grow good berries requires good plants, and we know how to grow them. We expect to increase our planting this coming spring, especially the Flower Department, and assure you that nothing but the best and finest varieties will be grown. We cannot afford to fool away our time and high priced labor on inferior and worthless varieties of anything. The best is none too good.

You now know where to find us and what we propose to accomplish. Our success will depend largely on your support and we hope to have at least a part of your business. We thank you for your patronage in the past and hope to merit the same in the future by giving good service.

With best wishes to all for the New Year.

H. W. JENKINS,
M. D. JENKINS.



STRAWBERRIES

This is the one berry that is grown all over the United States under all kinds of climate and on all kinds of soil. There are many varieties but conditions that suit one may not suit another. Selling our home at Boonville in May and moving in July, we were compelled to let our strawberries go with the place. Fortunately M. D. Jenkins, who has been in Carthage the past three years, planted 3 1/2 acres of Aromas the past spring so we have a fine lot of plants of this variety to offer—but nothing else in strawberries.

The Aroma is the commercial berry of the Ozarks, that is shipped from "Dan to Beersheba"—New Orleans to Winnipeg. Our plants are strictly first class and will be dug and packed right. All plants packed in sphagnum moss and wrapped in "safe pack paper." This insures "every plant a live one." Cost more but worth the price. Our plants were all under a heavy straw mulch December 17 before the sleet came.

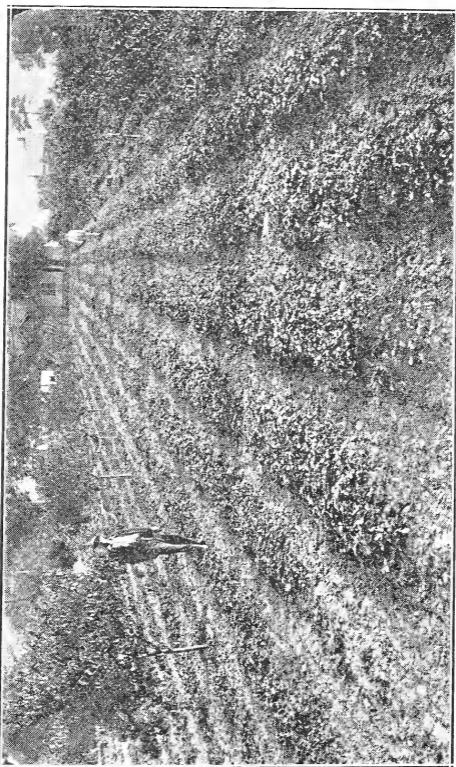
AROMAS—

	Per 100	250	500	1000
Price.....	\$1.00	\$2.00	\$3.50	\$6.00

Note: All strawberries are tied in bunches of 25; won't break bunches.

Any man in this day and age of high priced labor and material who offers plants at a dirt cheap price, it

is safe to guess he is getting all they are worth. Cheap prices simply mean inferior stock grown and handled by cheap methods that prove dear in the end to the planter. One live plant is worth more than 100 dead



AROMAS IN A 2-YEAR ORCHARD

ones. A good article of anything costs more than an inferior one. Beware of the man who offers you something for nothing.

RASPBERRIES

The raspberry is held in high estimation by nearly everybody as one of the most agreeable sub-acid fruits, not only for dessert but also for making jams, jellies, sauces, etc. Succeeding the strawberry at the beginning of summer when there is little else makes it almost invaluable in supplying the table with delicacies at that season of the year. We find that the Black Caps grown here in Southwest Missouri are nearly free from Anthracnose, a disease that attacks the canes so bad in many places.

Raspberries are divided into two families—the Blacks which propagate from the tips and the Reds from the roots.

Varieties

CUMBERLAND—This was called by the originator “The Business Black Cap.” It is a very productive variety. Medium to late in ripening; the berries are large. Originated in the Cumberland Mountains of Pennsylvania.

	Per 25	100	500
Price for Tip Plants.....	\$0.75	\$2.50	\$10.00

KANSAS—An early variety that ripens its berries all in a few days. Jet black canes. **Hardy** and productive. Originated at Lawrence, Kansas.

	Per 25	100	500
Price.....	\$0.75	\$2.50	\$10.00

GREGG—An old standard late variety. Berries large and firm.

	Per 25	100
Price.....	\$1.00	\$3.00

ST. REGIS—A vigorous hardy red variety. First crop prolific but medium size. Sold by some as an everbearer. With us later crops not of much value.

	Per 25	100
Price.....	\$1.00	\$3.00

CUTHBERT—This is a late berry, much larger than St. Regis. Not as productive but better quality. In some places susceptible to gall knots on roots, but a fine berry.

	Per 25	100
Price.....	\$1.00	\$3.00

BLACKBERRIES

Are sometimes called the Poor Man's Berry. I suppose because they are found growing wild in the woods and pastures and along the roadsides. But the number of wild berries is growing less and less each year, so the only safe plan to be sure of that blackberry jam is to plant and care for a patch of tame berries. By planting early and late varieties the berry season can be made to cover three months of the year and by canning and preserving a family can have these delicious fruits the whole year round.

EARLY HARVEST—Small bushy canes, hardy and productive. Berries medium size—always ripe at wheat harvest.

	Per 25	100	500
Price.....	\$0.75	\$2.00	\$7.50

ELDORADO—A vigorous grower, strong, healthy canes. Matures the wood in good condition so does not winter-kill. Canes not much affected by Red Rust. Berries are very large, jet black and easily picked—separate easily from stem. Do not ripen all at once. Is the best all round berry I have ever grown. Stock limited.

	Per 25	100
Price.....	\$1.25	\$4.00

SNYDER—A hardy variety that never winter-kills. Is not affected by rust. Productive of medium-sized berries.

	Per 25	100
Price.....	\$1.00	\$3.00

CURRANTS

The best small fruit for jelly. Also fine for pies when green. The first fruit of the season ready to use.

WILDER—A fine large red variety.

	Each	10
	\$0.25	\$2.00

PERFECTION—An extra fine Red variety.

	Each
	\$0.25

WHITE GRAPE—A good productive white variety.

Each
\$0.25

Note: Currant bushes offered are **Fredonia, New York grown**. This means the best on the market.

GOOSEBERRIES

This is a valuable berry for planting and while the berries are rather difficult to pick on account of the spines, and because the berries are very acid they require lots of sugar, yet there are but few people who will pass up a piece of gooseberry pie when mother makes it.

DOWNING—A stocky growing variety productive of large berries.

Price, 2-year plants No. 1..... Each 10
\$0.25 \$2.00

HOUGHTON—Fast-growing and very productive of medium size berries.

Price, 2-year plants..... Each 10
\$0.25 \$2.00
Price, 1-year plants No. 1..... 0.20 1.50

CHAMPION—A large productive variety.

Price, 1-year No. 1..... Each
\$0.25

GARDEN ROOTS

Asparagus and Rhubarb are two necessary things to grow in your garden. The first things ready to use in the spring at a time when people are tired of canned goods—coming before berries are ripe.

GIANT ARGENTEUL ASPARAGUS—A French variety.

Price, 2-year..... Per 25 100
\$0.50 \$1.50

WASHINGTON—A new rust-proof variety. Highly recommended by U. S. Agri. Dept.

Price, 2-year..... Per 25 100
\$0.75 \$2.00

RHUBARB VICTORIA—2-year divided roots.

Price..... Each 10 25
\$0.15 \$1.25 \$2.50

LINNEUS—1-year whole roots.

	Each	10	25
Price.....	\$0.15	\$1.00	\$2.00

GRAPE VINES

Our grape display at Missouri State Fair has won many plate premiums and for four years in succession we have won first on best collection—1920-21-22-23, and the display made by my successor at Boonville won first in 1924—making 5 years straight.

Our vines for sale this spring are grown from cuttings taken from this vineyard but will be the last as we can no longer get cuttings from there.

MOORE'S EARLY—A large black grape. Ripens about 10 days ahead of Concord. A popular variety.

	Each	10	
Price, 2-year.....	\$0.20	\$1.50	
Price, 1-year.....	0.15	1.00	

CAMPBELL'S EARLY—A large black variety that produces very large compact bunches. Is more productive and we consider it a much better variety than the Moore's Early.

	Each	10	
Price, 2-year No. 1.....	\$0.25		
Price, 1-year No. 1.....	0.20	\$1.50	

BRIGHTON—A fast-growing variety. Produces large bunches. Is the sweetest and best table grape grown. The one that bees are very partial to.

	Each	10	
Price, 2-year No. 1.....	\$0.20	\$1.50	
Price, 1-year.....	0.15	1.25	

GOETHE—A vigorous-growing vine, moderately productive of pink-colored grapes which ripen late. Fine aromatic flavor. **Only a few.**

	Each		
Price.....	\$0.25		

NIAGARA—A vigorous-growing vine, producing very large cream-colored grapes. The most popular white variety.

	Each	10	
Price, 2-year.....	\$0.25	\$2.00	
Price, 1-year.....	0.20	1.50	

CATAWBA—An old variety that ripens late. A red grape of very fine flavor. Famous for the wine.

	Each	10
Price, 2-year	\$0.20	\$1.50
Price, 1-year No. 1	0.15	

WORDEN—A vigorous grower productive of large well shouldered bunches of most excellent flavor. Ripens ahead of the Concord and is one of the very best varieties of black grapes grown.

	Each	10
Price, 2-year	\$0.20	\$1.50
Price, 1-year	0.15	1.25

CONCORD—This is the old standby. The standard of perfection that all others are compared to. More largely planted than all others combined.

	Each	10
Price, 2-year	\$0.20	\$1.50
Price, 1-year	0.15	1.00

CACO—A new and very promising variety. Vigorous grower. Grapes large, of red color.

	Each	
Only a few, 1-year	\$0.25	

ORNAMENTAL SHRUBS

People are planting more shrubbery each year. To make a home complete it must be planted and adorned with flowers and shrubs. To meet this demand I have added a few ornamental shrubs of the best varieties.

SPIREA ANTHONY WATERER—A dwarf-growing variety and a continual bloomer all summer and fall of very small, delicate flowers.

	Each	10
Price, 18-inch	\$0.50	\$4.00

SPIREA VAN HOUTI (or Bridal Wreath)—This is the finest of all spireas.

	Each	10
Price, 3 to 4 feet	\$0.50	\$4.00
2 to 3 feet	0.40	3.00
18 inches	0.25	2.00

HYDRANGEA ARBORESCENS (or Hills of Snow)—A free bloomer that lasts a long, long time. A native of Ohio.

	Each
Price, 2 to 3 feet.....	\$0.75
18 to 24 inches.....	0.50

HYDRANGEA PANICULATA—Produces very large flowers late in summer.

	Each	10
Price, 2 to 3 feet.....	\$0.75	\$5.00
18 to 24 inches.....	0.50	

BARBERRY THUNBERGII—This is a beautiful shrub either planted single or as a hedge foliage. Hangs on all winter and changes to a red color and bears red berries which also hang on all winter.

	Each	10
Price, 3-year, 12 to 18 inches.....	\$0.40	\$3.00
2-year, 10 to 12 inches.....	0.25	2.00

BARBERRY BOX—Dwarf variety.

	Each
Price, 12 inches.....	\$0.50

WIGELIA EVA RATHE—A continual bloomer.

	Each
Price, 12 to 18 inches.....	\$0.50

MEEHANS MALLOWS (Hibiscus)—Red, fine large flowers. Strong roots.

	Each
Price.....	\$0.50

A high price paid for a tree or plant will not make it bear fruit true to name if wrongly labeled by a dishonest man. Neither will a dirt cheap price be any indication that you have a bargain if your plants are half dead when received.

ROSES

“The Queen of Flowers.” The roses offered were grown in California near Los Angeles. They are desert climate, field-grown plants on their own roots (not budded stock), strong vigorous plants (not the small greenhouse potted plants) but are plants that will bloom the first year. The very best plants you can buy. Try them.

Those marked (H. P.) are hybrid perpetual—(H. T.) Hybrid Tea Roses. Prices are 50c each except where noted. This is a very low price, quality considered.

MME. CAROLINE TESTOUT (H. T.)—Clear, bright satiny pink. A free bloomer. The rose that made Portland, Ore., famous as the Rose City.

BETTY (H. T.)—Exquisite color, being copper overspread with a beautiful golden-yellow. Flowers are very fragrant and large in size. A strong vigorously growing bush. (A native of Ireland.)

FRAU KARL DRUSCHI (H.P.)—A vigorous grower, long pointed buds; pure snow-white, blooms large. One of the largest and best white roses.

LOS ANGELES (H. T.)—One of the finest American roses ever introduced. Color luminous flame-pink, toned coral, shaded translucent, gold at base of petals, fragrant flowers on strong stems.

Each..... 75c

MISS WILMOT (H. T.)—One of the most refined and charming roses ever raised. The color is a uniform soft sulphur cream; in shape and form this rose is a model of perfection. Every flower perfect and a free-bloomer. A Gold Medal Rose.

Each..... 75c

GEN. McARTHUR (H. T.)—A bright scarlet-red rose. A fine bloomer and very fragrant.

SUNBURST (H. T.)—Deep yellow with orange-yellow center. Large, full and beautiful.

Each..... 75c

CRIMSON QUEEN (H. T.)—Strong grower, large flower, color a rich bright velvety crimson. Always in bloom.

CLIMBING ROSES

CLIMBING AMERICAN BEAUTY—Heavy, strong grower; hardy everywhere. Color rich red passing to orange.

CRIMSON RAMBLER—A popular well-known rose. Needs no description.

Each..... 50c

CLIMBING SUNBRUST—A strong vigorous grower. The flower is the same as on the bush form.

Each..... 75c

FLOWER DEPARTMENT

We are not professional florists but are growing certain lines of flowers such as Cannas, Dahlias, Gladiolus and expect to add others in connection with our other nursery stock and intend to make a special feature of this department in our new location here at Carthage. And hope to make the corner of Highland and River streets one of the **show places of the town**. We shall grow only the very finest varieties in its class. Anything that fails to come up to our standard of excellence will be discarded so our customers may depend on the varieties listed as being the very best of the species, for we cannot afford to waste valuable ground, high priced labor and our own time on worthless varieties of either fruits or flowers.

GLADIOLUS—This is an easy flower to grow and a most beautiful one. Nothing finer for cut flowers, all it lacks is odor. By planting at several different times you can extend the blooming season for a long period.

AMERICA—This is probably the universal favorite of the named varieties. Very vigorous, strong, healthy plants. White and pink.

	Each	10	100
Price for strong bulbs.....	\$0.10	\$0.50	\$4.00

SCHWABEN—The finest of all Gladiola, of yellow color.

	Each	10	100
Price.....	0.10		\$5.00

BRENCHLEYENSIS—The best red variety.

	Each	10	100
Price.....	\$0.10	\$0.75	\$5.00

MAIDEN'S BLUSH—The peaches and cream of a Gladiola.

	Each		
Price.....			\$0.10

MRS. FRANK PENDLETON—Pink, a beauty.

	Each	10	100
Price.....	\$0.10	\$0.75	\$5.00

BARON J. HULOT—The finest deep blue.

	Each		
Price.....			\$0.10

	10	100	
MIXED VARIETIES , all colors.....	\$0.50	\$3.00	

FLOWER BULBS

Peonies

FESTIVA MAXIMA—The finest white variety. Flowers are large and beautiful. Pure white with occasionally a small spot of red in center. Strong roots.

	Each	10	
Price.....	\$0.50	\$4.00	

Dahlias

We are making a specialty of growing Dahlias and at the Cooper County Round-Up, 1923, our display of cut flowers was much admired and won all the premiums offered. Our Dahlia display at the 1924 Round-Up at Boonville, exhibited for us by Mrs. Fred Bauman, attracted much attention and favorable comment. Was not entered for premiums.

WM. AGNEW—A deep red extra fine profuse bloomer.

	Each	10	100
Price.....	\$0.15	\$1.00	\$8.00

KRIEMHILDE—A pink cactus variety that blooms late. Is a peculiar shaped flower and a pretty one. Attracts attention wherever shown.

	Each	10	100
Price.....	\$0.15	\$1.00	\$8.00

C. W. BRUTON—A strong growing variety with large yellow flowers. A late bloomer and very fine.

	Each	10	100
Price.....	\$0.20	\$1.50	\$10.00

FLORA DORA—A very deep dark red cactus variety; a profuse bloomer. This Dahlia won first premium on best cactus variety at Missouri State Fair, 1922.

	Each	10	100
Price.....	\$0.20	\$1.50	\$10.00

Special New Varieties

MINA BURGLE—Deep glowing crimson, blooms profusely from early till frost. Large flowers on long stems. One of the very best crimson Dahlias. Finest red.

	Each	10	
Price.....	\$0.35	\$2.50	

SOUV. DE GUSTAV DOAZON—Beautiful orange-red. Very large size. Plant is vigorous. Long stiff stems. One of the best.

Price..... Each 10
 \$0.35 \$2.50

HEINTZE—Pure white, extra large. A fine one.

Price..... Each 10
 \$0.35 \$2.50

DREER'S WHITE—A large white show Dahlia.

Price..... Each 10
 \$0.35

DELIGHTED—Pure white show Dahlia. Very large; only a few to offer.

Price..... Each 10
 \$0.50

GOLDEN GATE—This is a magnificent large yellow cactus. One that will please. Only a few bulbs.

Price, bulbs..... Each 10
 \$0.50

LIBBELE—A large single purple. Very beautiful.

Price..... Each 10
 \$0.50

Cannas

Cannas are growing in popularity each year with the new improved varieties. With their large and attractive bloom and the tropical effect of their foliage they brighten up and make a lawn very pretty and well repay all they cost. Plant some Cannas and show your neighbors how nice you can make your home look all summer and fall to frost. The varieties offered are the tested and tried ones.

The very best of their class. All **dormant roots**. We expect to increase our plantings of Cannas and Dahlias and become headquarters for these bulbs in Southwest Missouri.

KING HUMBERT—Bronze foliage. Grows three to four feet high. Is a free bloomer and produces large red flowers.

Price, bulbs..... Each 10
 \$0.15 \$1.00

YELLOW HUMBERT—A sport from King Humbert. Green foliage. Is a continual bloomer of the finest yellow flowers. When you have this variety you need no other yellow, for it is the whole show.

Price..... Each 10
 \$0.20 \$1.25

LOUISIANA—Has green foliage. Grows four to six feet high. Is a continual bloomer till frost of very large bright red flowers that make a fine display.

	Each	10
Price.....	\$0.15	\$1.00

PRESIDENT—Green foliage. Dwarf in growth, only two feet tall. Is a profuse and continual bloomer of very large scarlet-red flowers.

	Each	10
Price.....	\$0.20	\$1.50

APRICOT—Color is a buff-yellow, base overspread with salmon-pink. **Fine.**

	Each	10
Price.....	\$0.20

FLORENCE VAUGHAN—Green foliage; 3 feet; spotted yellow.

	Each	10
Price.....	\$0.20	\$1.50

MRS. ALFRED CONRAD—Green foliage; 4 feet; salmon-pink flowers.

	Each	10
Price.....	\$0.20	\$1.50

FRUIT TREES

We expect to plant a few fruit tree stocks this spring at our new location at Carthage, some apple grafts, cherry seedlings and peach seed, and grow a few trees of the best varieties for retail trade. Will handle a few trees this spring. Bought from reliable wholesale nurseries that we can guarantee to be first class stock. **We know trees.**

Apple

Have a few **Chenango, Stayman's Winesap** and **Delicious**. One-year whip trees. Grown at Boonville. 2 to 3 feet.

	Each	10
Price, 1-year apple.....	\$0.30	\$2.50
Price, 2-year, 11/16, No. 1, standard apple.....	0.60	5.00

Varieties—Jonathan, Grimes Golden, Maiden Blush, Stayman's Winesap, Delicious, Yellow Transparent.

	Each	10
Cherry—1-year, 11/16, 3 to 4 feet.		
Price.....	\$1.00	\$7.50

Varieties—Early Richmond and Montmorency.

Peach—1-year, 9/16, 4 to 5 feet.....	\$0.50	\$4.00
--------------------------------------	--------	--------

Varieties—Champion, Elberta, J. H. Hale, Heath Cling and Krummel's Late.

Note these prices are for trees packed and delivered at the Express office, Carthage. Trees cannot be shipped by Parcel Post.

I am interested in your success so with each order will mail plain printed instructions on how to handle and cultivate plants, bulbs and shrubs.

TESTIMONIALS

Farmers Co-operative Exchange,
Pleasant Green, Mo., 5-12-24.

H. W. Jenkins:

Dear Sir—I received the strawberry plants and will say they are a strong thrifty well-rooted lot.

Respectfully,
A. G. WOLF, Manager.

Saline County Home,
Marshall, Mo., 4-22-24.

H. W. Jenkins:

Dear Sir—Plants came in fine shape and I am well pleased with them.

Respectfully,
HARRY HUDSON, Supt.

Boonville, 1-11-25

H. W. Jenkins & Son:

Gentlemen—The asparagus and rhubarb I got from you all did fine. Didn't lose a plant.

W. L. MORTON, Gardener.

Note: Mr. Morton bought over 1,000 plants.

If you doubt these testimonials being true, write to any of them enclosing a stamp for reply and find out.

Big Cabin, Okla., 1-17-25.

H. W. Jenkins & Son,
Carthage, Mo.

Dear Sirs—I am an old customer, having bought plants from you 30 years ago at Boonville, Mo. I received a bill of vines and strawberries from you last spring and they were just as nice and fresh as those I used to get right out of your nursery at Boonville. Everything I ever received from you was just as you represented it.

Very truly yours,
R. L. STEIGLEIDER.

Shenandoah, Iowa, 8-30-24.

H. W. Jenkins & Son,
Carthage, Mo.

Gentlemen—Yours of the 8th to hand and we note change of address and will correct our mailing directory so that you will receive our price lists. We trust to have continued pleasant business relations with you such as we have had in the past. Wishing you success, we remain,

SHENANDOAH NURSERIES,
By A. F. LAKE.

Lexington, Mo., 5-6-24.

H. W. Jenkins:

Dear Sir—Received plants O. K. Was well pleased with them. Also your choice of varieties.

C. F. MCGOWAN.

Lincoln, Mo., 5-21-24.

H. W. Jenkins:

Dear Sir—Received the plants in good condition. Thank you for information about planting.

CLOWSE E. WENIG.

Boonville National Bank,
Boonville, Mo., 1-6-25.

To Whom It May Concern:

I wish to state in regard to Mr. H. W. Jenkins that in our opinion he is responsible for his contracts. We have known him for many years and all the business deals that we have had with him have been handled in a very satisfactory manner.

Very truly,
B. M. LESTER, President.

St. Joe, Mo., 2-26-24.

H. W. Jenkins:

Dear Sir—Please send me your price list. The plants received from you last spring were very fine.

MRS. CHAS. CATRONS.

2117 S. 14th St.

Sedalia, Mo., 1-8-25.

H. W. Jenkins & Son:

Gentlemen—The shrubs, rose bushes and bulbs I bought from you last spring all did well and grew wonderfully. Send me your new price list. Will want more this spring. Best wishes for 1925.

J. W. Hicks, Grocer.

Sedalia, Jan. 23, 1925.

H. W. Jenkins & Son:

Dear Sirs: I take pleasure in saying that the bill of plants bought from you last spring not a plant or shrub died, was all true to name, was vigorous, strong plants and in excellent shape when received.

Yours truly,

HERMAN E. BLOESS,

(Mr. Bloess bought a
large bill of Spirea)

Lumberman.

Premier Hatchery, Inc.

“Chicks as Hardy as Missouri Mules”

J. H. Chambers, Mgr.

Warrensburg, Mo., 1-4-25.

Mr. H. W. Jenkins:
Carthage, Mo.

Dear Mr. Jenkins—I am glad to know that you are going into business at Carthage and admire you for staying by your guns and not giving up. Sets a good example for us younger people. I certainly wish you a splendid success which surely you so well deserve.

Your friend,

JOE H. CHAMBERS.

TERMS

Cash with order or satisfactory references. When you have received your order and examined it and if it is not satisfactory, repack, prepay charges, and return at once and your money will be refunded. After plants are accepted they are yours. We assume no responsibility for failures over which we have no control. But on proof of same will replace free of charge any plants that don't prove true to name.

All transportation charges prepaid, except on trees. A contract fair to both parties.

Ready to serve you,

H. W. JENKINS & SON,
1701 River St., Carthage, Mo.

The prices quoted in this list mean exactly what your plants will cost you delivered either at your mailbox or express office here. Trees cannot go by parcel post.



OUR CERTIFICATE OF NURSERY INSPECTION

University of Missouri, Agricultural Experiment
Station No. 20
Columbia, Mo., Sept. 2, 1924.



CERTIFICATE OF NURSERY INSPECTION

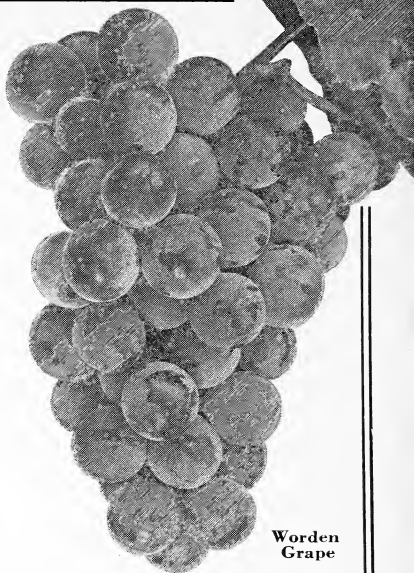
This is to certify that in accordance with the Nursery Inspection Act, enacted by the 47th General Assembly and approved March 27, 1913, the nursery stock of the H. W. Jenkins & Son Nursery, grown at Carthage, Jasper county, Missouri, was inspected on August 27, 1924, by a duly authorized inspector and found apparently free from dangerously injurious insects or plant diseases. Valid until July 1, 1925, unless sooner revoked.

L. HASEMAN,
Entomologist and Chief Inspector.

*Quality
Plants
Guaran-
teed*

22

*Prompt
Service*



**Worden
Grape**

*Satisfied Customers Mean
More Business*

H. W. Jenkins & Son

Carthage, Mo.

1925